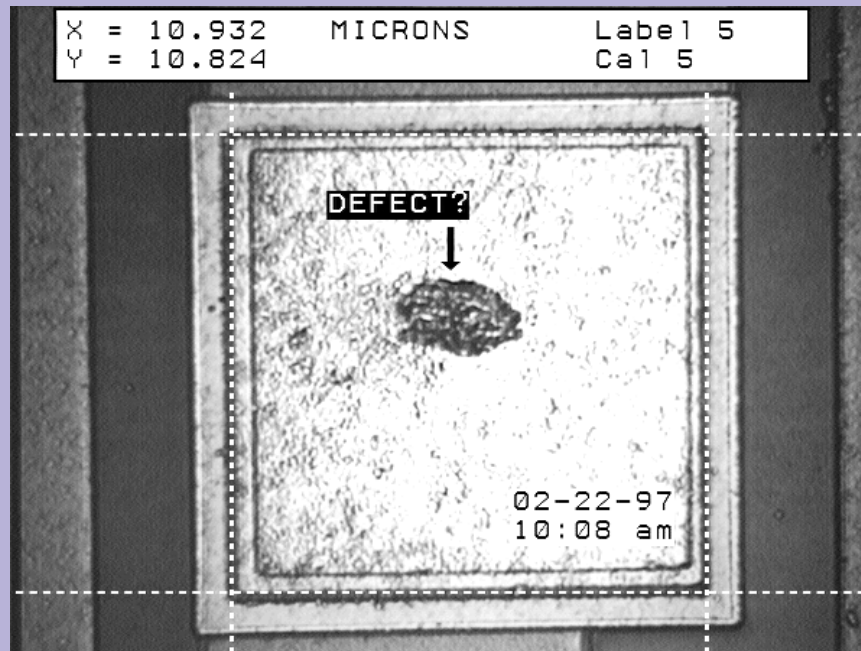


# VIA<sup>®</sup>-170

## Video Image Marker-Measurement System



## FEATURES

- **Measures the horizontal (X) dimension, vertical (Y) dimension, horizontal-vertical (XY) dimension and diagonals (point-to-point).**
- **Calculates the angle** when operators place two or more points to define each leg of an angle, even when the vertex is not in view. Users can turn on or off a graphic display of the angle as it is being measured.
- **Measures the radius and circumference of a circle** when operators place three or more points along the perimeter of a circular image. Users can turn on or off a graphic display of the circle as it is being measured.
- **Statistics mode** with mean, standard deviation, low reading, high reading and range for X, Y, XY, point-to-point, angle, radius, circumference and area measurements.
- **Security menu** which allows for marker overlay protect and calibration protect. With this protection enabled only password holder can alter marker overlays or calibration.
- **Type text** to label the video image. The text can be positioned anywhere in upper and lower case characters.
- **Crosslines** can be displayed in one of ten different line patterns. Crosslines can also have an open or closed intersection and can be auto-centered.
- **Align mode** allows users to move multiple markers in unison to use as a go/no go gage.
- **Freehand draw or write** over the video image in choice of three different line thicknesses with an optional light pen, mouse pen or mouse.
- **Displays path length of freehand draw-**

(continued on next page)

**BOECKELER<sup>®</sup>**

## FEATURES *(continued)*

- ing as drawing takes place with an optional light pen, mouse pen or mouse.
- **Calculates the area of a cell or shape** when operators define the cell or shape.
- **Measures elapsed time** simultaneously with X, Y, XY and point-to-point measurement or independently.
- **Measures the long and short chords** of a cell or object when operators indicate the extremes of the perimeter.
- **Offers a counting mode.** Operators tag each cell or particle to be counted. Up to 10 different categories can be marked.
- **Ten different pointers** including arrows, standard cross hairs, a target circle, a small circle, a target box and a small box.
- **A sizeable and positionable reference circle or scale** can be created for a quick comparison of objects or cells to a standard.
- **Sizeable grids** can overlay the video image to assist in counting.
- **The current date and time** may be displayed anywhere.
- **Horizontal, vertical or diagonal lines** may be positioned in one of three different line thicknesses.
- **Store up to 10 pages of marker overlays** from simple to complex.
- **Up to 10 different calibrations** may be stored for future use.
- **RS-232 output** so that users can transmit ASCII data of measurements and statistics to printers or computers.
- **Markers and measurement lines may be displayed in up to three different colors or shades** for optimal contrast with the video image (color markers will be displayed only if an optional VIA-RGB or VIA-Y/C interface is being used with RGB or Y/C monitors).

## SPECIFICATIONS



The VIA-170 is pictured here with optional knob controller, light pen and VIA-RGB interface.

|                              |   |
|------------------------------|---|
| Video Input.....             | RS-170, CCIR, NTSC, PAL; Composite (BNC X 1); 1.0Vp-p, 75ohms                               |
| Video Output.....            | Unity gain, loop through; Composite (BNC x 1); 1.0Vp-p, 75ohms                              |
| Overlay Contrast Range.....  | Black to White  |
| Resolution.....              | 1024 (H) x 482 (V) for RS-170 and NTSC; 1024 (H) x 512 (V) for CCIR/PAL                     |
| Stability.....               | Reticle line placement accurate to one line of video, phased locked to camera for stability |
| Measurement Data Output..... | Through RS-232 port (ASCII data)  |
| Ambient Temperature.....     | 0° C to 55° C   |
| Power Supply.....            | 110/220 VAC, 0.5 AMP (60 Hz)  |
| Dimensions of Base Unit..... | 9.9" (W) x 2.6" (H) x 7.0" (D)  |
| Approximate Weight.....      | 9 lbs., 1 oz.   |
| Warranty.....                | 1 year parts and labor  |

### Your Boeckeler Dealer:



**Boeckeler Instruments, Inc.**  
 4650 South Butterfield Drive  
 Tucson, Arizona 85714  
 (520) 745-0001  
 (800) 552-2262 within the U.S.  
 FAX: (520) 745-0004  
 E-mail: info@boeckeler.com